

CNG DRYER / PURIFIER

High pressure dryer / purifier for NGV refueling

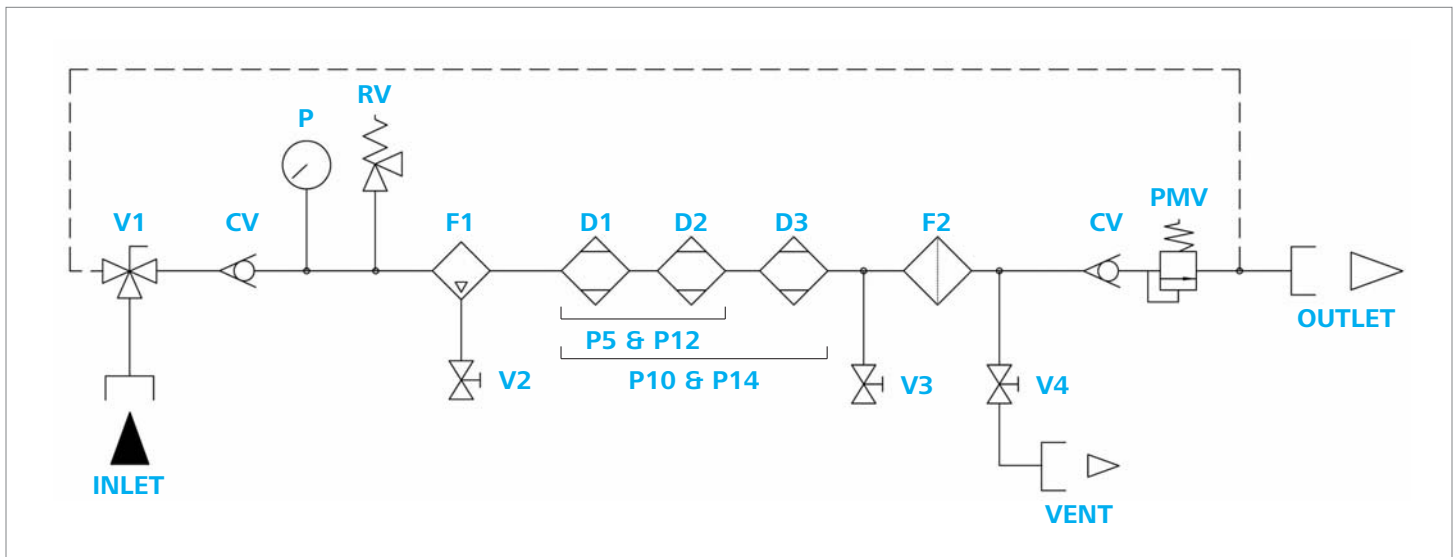
- › **Pressure**
2000 to 5000 psig
- › **Flow Rate**
40 scfm or 150 scfm



BAUER high pressure dryers for compressed natural gas are the economical and logical choice for drying natural gas for NGV refueling.

The dryers are low cost thanks to their simple design and logical because not only do they dry the gas but they eliminate oil contamination before it can accumulate in storage or in the NGV's fuel system.

CNG Dryer / Purifier



- CV** - Check Valve
- D1** - Dryer Chamber / Cartridge
- D2** - Dryer Chamber / Cartridge
- D3** - Dryer Chamber / Cartridge
- F1** - Coalescing Filter
- F2** - Particulate Filter
- P** - Pressure Gauge
- PMV** - Pressure Maintaining Valve
- RV** - Relief Valve
- V1** - Bypass Valve
- V2** - Manual Drain Valve
- V3** - Gas Sample Valve
- V4** - Vent Valve

STANDARD SCOPE OF SUPPLY

- › Coalescing filter at inlet with manual drain
- › Check valve at inlet
- › Liquid filled pressure gauge at inlet
- › Safety valve at inlet for overpressure protection
- › 2 or 3-tower dryer each with replaceable dryer cartridge
- › 3-micron particulate filter downstream of dryer towers
- › Gas sampling valve
- › Check valve and pressure maintaining valve installed at outlet
- › Bypass valve and vent valve to facilitate maintenance and cartridge replacement

Technical Data

Model	Processing Capacity ¹⁾		Maximum flow rate	Number of dryer towers	Dryer cartridge composition	Dryer cartridge type
	FT ³	GGE				
High pressure dryer / purifier						
P5-CNG	222,300	1800	40	2	MS 3A	Disposable
P10-CNG	327,275	2650	^	3	^	^
P12-CNG	642,200	5200	150	2	^	Repackable
P14-CNG	951,000	7700	^	3	^	^

1) Processing capacity referenced to 7 lbs / MMscf moisture content. Values are approximate.
 MS = Molecular Sieve FT³ = Cubic Feet GGE = Gasoline Gallon Equivalent



North Carolina
 210 Labrador Drive
 Randleman, NC 27317
 Phone 336.674.0749
 FAX 336.674.3688
www.safeairsystems.com

**North Carolina, South Carolina,
 Virginia, Maryland, Delaware
 and the District of Columbia**
1.800.424.8633