

## MEDIUM PRESSURE

### 3-Stage Compressors

› **Pressure**

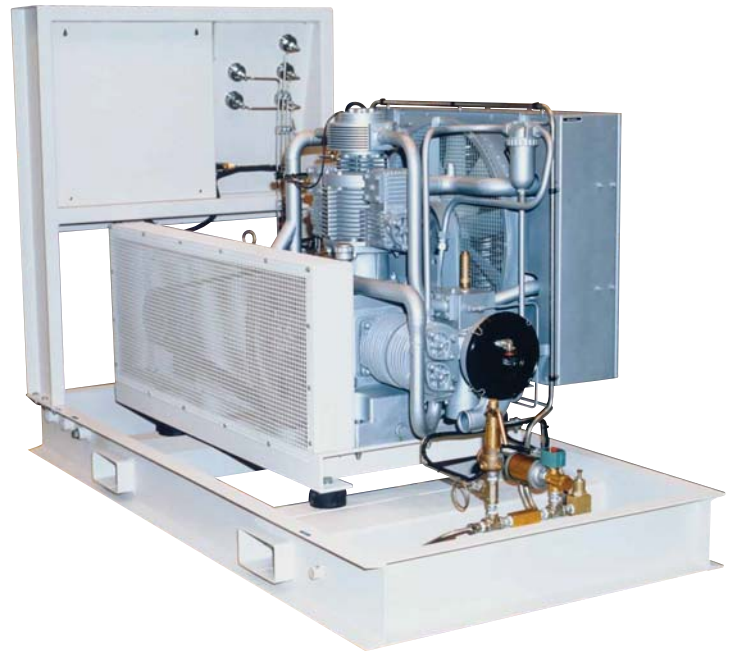
350 to 1000 psig  
24 to 69 bar

› **Capacity**

7.5 to 240 scfm  
212 to 6800 l/min

› **Power**

5 to 150 hp  
3.7 to 110 kw



**The medium pressure range of industrial air compressors from the technology leader in high pressure features continuous-duty rated, 3-stage, air cooled, pressure lubricated compressors for the most demanding requirements.**

The full-featured control system allows for unattended, automatic operation. Heavy-duty frames and balanced compressor designs do not require a special foundation for installation.

## Medium Pressure

### STANDARD SCOPE OF SUPPLY

- › 3-stage, air cooled, pressure lubricated, continuous-duty rated reciprocating compressor
- › Electric motor (ODP) with v-belt drive, belt guard and belt tensioning device
- › Automatic condensate drain with condensate collector  
Collector includes switch for high condensate level
- › Automatic operation with PLC controller  
Includes operator keypad and text display for operation, maintenance and troubleshooting
- › NEMA 4 rated electrical enclosure with UL listed control panel
- › Fused control voltage transformer
- › Hour meter
- › Pressure sensors for oil pressure and final pressure
- › Temperature switch
- › Emergency stop push button
- › Audible alarm
- › Ambient temperature range 40° to 113° F
- › 12 month warranty

### 50 - 125 hp models

- › Soft starter
- › TEFC motor
- › Circuit breaker disconnect

### AVAILABLE ACCESSORIES

- › TEFC motor (5 - 40 hp)
- › Enclosure
- › Constant speed control

## Technical Data

| Model                                | Capacity FAD <sup>1)</sup> |             | Number of stages | Motor            |          | Drive   |
|--------------------------------------|----------------------------|-------------|------------------|------------------|----------|---------|
|                                      | scfm                       | l/min       |                  | hp <sup>2)</sup> | kw       |         |
| <b>350 - 1000 psig (24 - 69 bar)</b> |                            |             |                  |                  |          |         |
| B12.4                                | 7.5                        | 212         | 3                | 5                | 3.7      | E1 / E3 |
| B22.5                                | 24 - 33                    | 680 - 935   | 3                | 15 - 20          | 11 - 15  | E3      |
| B23.4                                | 48 - 61                    | 1360 - 1728 | 3                | 30 - 40          | 22 - 30  | E3      |
| B25.4                                | 75                         | 2125        | 3                | 50               | 37       | E3      |
| B28.2                                | 98 - 113                   | 2775 - 3200 | 3                | 60 - 75          | 45 - 55  | E3      |
| B25.5 <sup>3)</sup>                  | 164                        | 4645        | 3                | 100              | 75       | E3      |
| B28.3 <sup>3)</sup>                  | 200 - 240                  | 5665 - 6800 | 3                | 125 - 150        | 93 - 110 | E3      |

1) Compressor capacity (FAD) is referenced to standard inlet conditions and 80% of the compressor's maximum working pressure. Tolerance +/- 5%.

2) 3-phase motors only, 60 Hz standard. 50 Hz available on request.

3) Maximum discharge pressure of 900 psig.

E1 = 230 / 1 / 60 E3 = 230 - 460 / 3 / 60 Other voltages and frequencies available upon request. Engine drives available.



North Carolina  
210 Labrador Drive  
Randleman, NC 27317  
Phone 336.674.0749  
FAX 336.674.3688  
[www.safeairsystems.com](http://www.safeairsystems.com)

North Carolina, South Carolina,  
Virginia, Maryland, Delaware  
and the District of Columbia  
**1.800.424.8633**