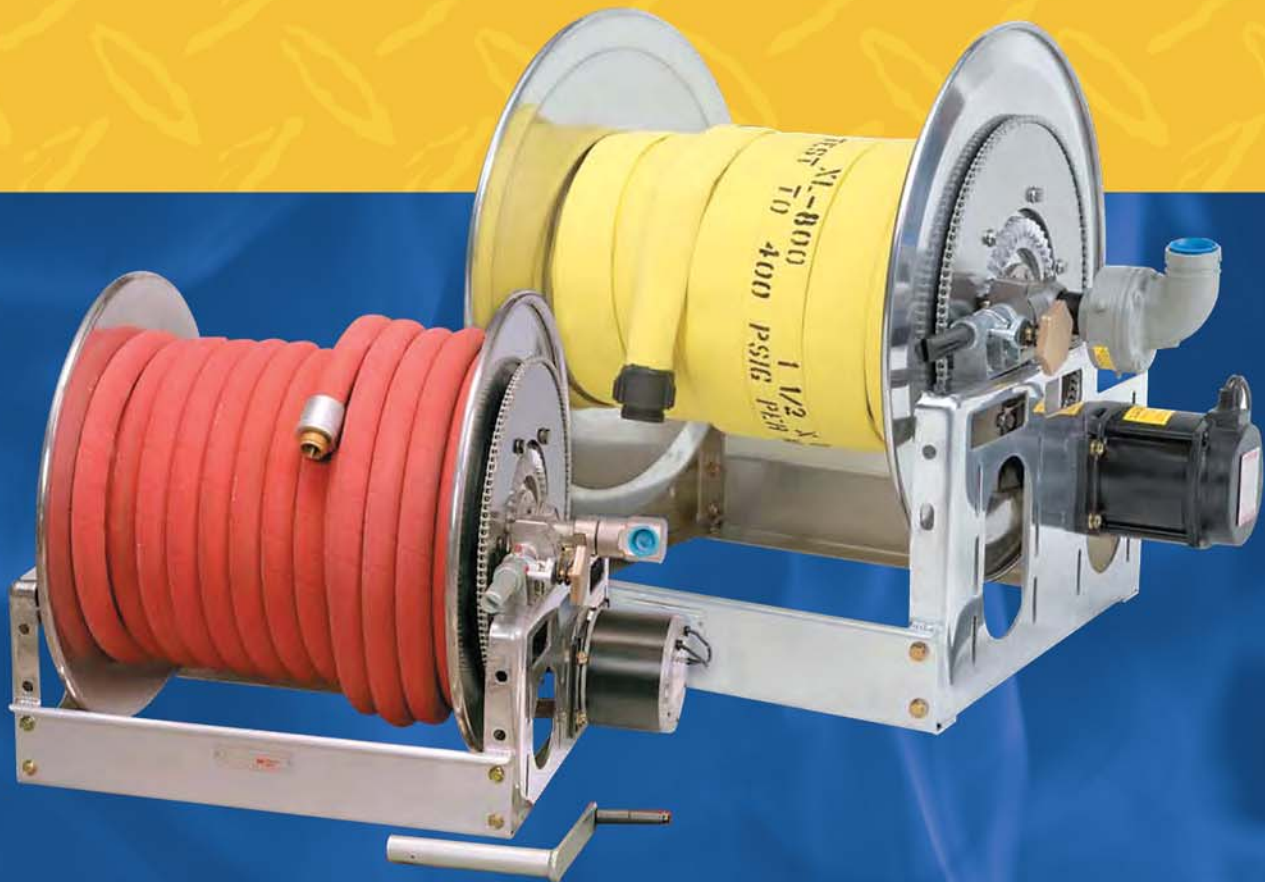




# FIREFIGHTING REELS



North Carolina  
210 Labrador Drive  
Randleman, NC 27317  
Phone 336.674.0749  
FAX 336.674.3688  
[www.safeairsystems.com](http://www.safeairsystems.com)

Worldwide Distribution and Service.  
**1.800.424.8633**



# F4000

## COMPACT REELS FOR BOOSTER HOSE

To handle single 3/4" I.D. or 1" I.D. hose.

- Choose direct crank rewind (removable) or chain and sprocket drive powered by electric, hydraulic or compressed air motor.
- Power rewind supplied with comet brake.
- Direct crank rewind supplied with cam-lock brake.
- Standard inlet 90° ball bearing swivel joint with 1" female NPT threads.
- Standard outlet 1" male NST threads (1.375" x 8 threads per inch).
- Consult factory for other sizes and/or threads.
- Standard inlet, outlet riser and hub assembly are steel (also available in stainless steel).
- Rollers and roller mounting brackets are accessory items. Specify roller position.



Standard Electric Motor Configuration Shown

- Pressures to 1000 psi (69 bar).
- Temps from -60°F to +250°F (-51°C to +121°C).
- Consult factory for other pressures and temperatures.

**CAUTION:** F4000/4100 series reels not recommended for use with Niedner Reeltex hose.

### Parts Drawing – ISO 68

Model Number	Hose Capacity of Reel			Approx. Weight			Reel Dimensions***						
	feet			Crank Rewind 2			inches						
	m.			lb.			mm.						
For Power Rewind See Note 4	I.D. (in)	3/4"	1"	NET	UPS FedEx Ship Wt.	FREIGHT Ship Wt.	A	B	E CRANK	E POWER	F CRANK	F POWER	X
I.D. (mm)	19	25	O.D. (in)										
F4024-17-18	100	50	46	83*	81	21	533	16	16.5	19	32.62	27	19.5
	30	15	21	38	37	21	533	406	419	483	829	686	495
F4038-17-18	200	100	70	-	125	35	889	30	16.5	19	46.62	41	33.5
	61	30	32	-	57	35	889	762	419	483	1184	1041	851

#### Notes:

Specifications subject to change.

1. Upon request, reels can be supplied with drum lengths other than shown and with disc sizes in other diameters.
2. Weights shown in chart are for crank rewind models. Add these amounts for power rewind models.

	Net (lbs.)	Ship (lbs.)	Net (kg.)	Ship (kg.)
Electric	18	18	8.2	8.2
Hydraulic	15	15	6.8	6.8
Air	15	15	6.8	6.8

3. Dimension "F" is the overall length of standard model reels. On crank rewind models, the dimension shown is with the crank in rewind position. Reels require 3-1/2" clearance to remove crank handle.

4. When ordering power rewind models, prefix number with:  
 A = Air Rewind    E = Electric Rewind    HD = Hydraulic Rewind  
 (Air rewind reels are supplied with control valve and 18" air hose; 12v and 24v DC rewind reels are supplied with switch and solenoid, 115v AC rewind reels are not supplied with switch but can be ordered separately, hydraulic rewind reels are not supplied with control valve.)

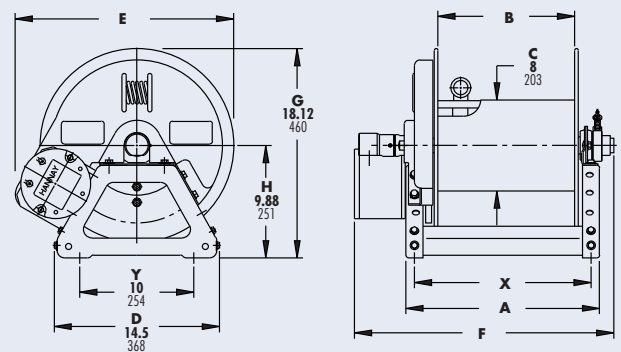
**5. Be sure to check dimensions and weights prior to ordering.**

6. Some roller options may prohibit the use of our molded chain guard.

**NOTICE:** A Flexible Connector must be used between the inlet pipe and the inlet swivel joint.

\*Dimensional weight may apply when shipped as a parcel package (via FedEx or UPS Ground).

\*\*\*x,y indicate mounting holes.



Optional External Mounting Brackets part no. 9906.0025 Add 2-1/2" to X dimension shown in the chart.

# F4100

## MANUAL OR POWER REWIND REELS

To handle single 3/4" or 1" I.D. hose.



Electric Rewind Shown with Gear Driven Crank Rewind

- Lightweight compact reels designed for long lengths of hose in manual and power rewind.
- Gear driven crank rewind handle is removable.
- Chain and sprocket drive powered by electric, hydraulic, or compressed air motor.
- Gear driven crank rewind, adjustable pinion brake.
- Standard inlet 90° ball bearing swivel joint 1" female NPT threads.
- Standard outlet 1" male NST threads.
- Optional Rollers: Specify roller position when ordering.
- Pressures to 1000 psi (69 bar).
- Temperatures from -60° F to +250° F (-51° C to +121° C).
- Consult factory for other pressures & temps.

**CAUTION:** F4000/4100 series reels not recommended for use with Niedner Reeltex hose.

### Parts Drawing – ISO 216

Model Number	Hose Capacity of Reel			Approx. Weight Crank Rewind <sup>3</sup>		Reel Dimensions***					
	I.D. (in) I.D. (mm)	3/4" 19	1" 25	NET	SHIP	A	B	E CRANK	E POWER	F	X
For Power Rewind See Note 5	O.D. (in) O.D. (mm)	1-9/32" 33	1-9/16" 40								
F4118-17-18		50 15	35 11	62 28	97 44	15 381	10 254	18 457	20.5 521	21.5 546	7.5 190
F4124-17-18		100 30	50 15	72 33	107 49	21 533	16 406	18 457	20.5 521	27.5 699	13.5 343
F4130-17-18		150 46	75 23	83 38	118 54	27 686	22 559	18 457	20.5 521	33.5 851	19.5 495
F4138-17-18		200 61	100 30	96 44	131 59	35 889	30 762	18 457	20.5 521	41.5 1054	27.5 698

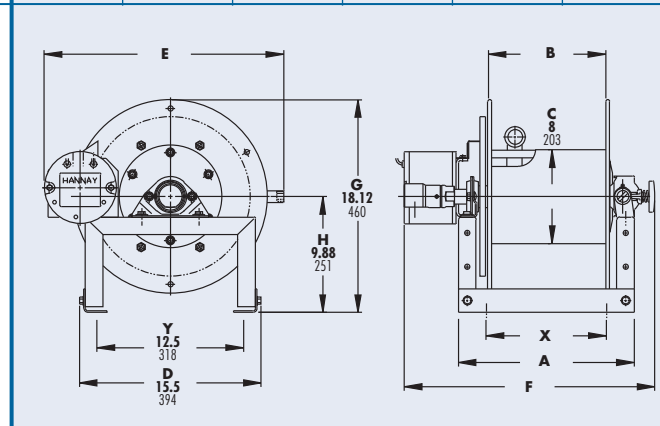
**Notes:**

1. Specifications subject to change.
2. Upon request, reels can be supplied with drum lengths other than shown.
3. Weights shown in chart are for crank rewind models. ADD these amounts for power rewind models:
 

	Net (lbs.)	Ship (lbs.)	Net (kg.)	Ship (kg.)
Electric	18	18	8.2	8.2
Hydraulic	15	15	6.8	6.8
Air	15	15	6.8	6.8
4. Dimension "F" is the overall length of standard model reels.
5. When ordering power rewind models, prefix model number with:  
 A = Air Rewind    E = Electric Rewind    HD = Hydraulic Rewind  
 (Air rewind reels are supplied with control valve and 18" air hose; 12v and 24v DC rewind reels are supplied with switch and solenoid; 115v AC rewind reels are not supplied with switch but can be ordered separately; hydraulic rewind reels are not supplied with control valve.)
6. **Be sure to check dimensions and weights prior to ordering.**

**NOTICE:** A Flexible Connector must be used between the inlet pipe and the inlet swivel joint.

\*\*\* x,y indicate mounting holes.



## F

**FOR BOOSTER HOSE**

**To handle 3/4" I.D. or 1" I.D. hose.**

- Painted steel booster hose reel is dependable, rugged.
- "Super Booster" (aluminum construction) reel weighs up to 30% less than standard booster reel. Stainless Steel construction is also available.
- Gear-driven crank rewind is standard. Choose chain and sprocket drive powered by electric, hydraulic or compressed air motor.
- Pinion brake standard.
- Standard inlet 1" 90° ball bearing swivel joint with 1" female NPT threads.
- Standard outlet 1" male NST threads. (1.375" x 8 threads per inch.)
- Consult factory for other sizes and/or threads.
- Standard inlet, outlet riser and hub assembly are steel (also available in stainless steel).
- Rollers and roller mounting brackets are accessory items. Specify roller position
- Pressures to 1000 psi (69 bar).
- Temperatures from -60°F to +250°F (-51°C to +121°C).
- Consult factory for reels to operate at other pressures and temperatures.

**CAUTION:** When using Niedner Reeltex hose a special riser and/or larger drum diameter is required.



**Standard Configuration**



Parts Drawing: Series F – ISO 84, Super Booster – ISO 122.

Model Number	Hose Capacity of Reel			Approx. Weight Crank Rewind <sup>3</sup>				Reel Dimensions <sup>***</sup>									
	feet m.			lb. kg.				inches mm.									
	I.D. (in) I.D. (mm)	3/4" 19	1" 26	STEEL		ALUM		A	B	D	E	F CRANK	F POWER	G	H	X	Y
*F32-19-21		150 46	100 30	102 46	144 65	80 36	122 55	29.5 749	24 610	20.5 521	21.62 549	34.25 870	34.38 873	21.5 546	12.12 308	21.5 546	16.75 425
*F24-23-24		150 46	100 30	92 42	134 61	75 34	117 53	21 533	15.5 394	20.5 521	23 584	25.75 654	25.88 657	23.5 597	12.12 308	13 330	16.75 425
*F30-23-24		250 76	150 46	105 48	147 67	82 37	124 56	27.5 699	22 559	20.5 521	23 584	32.25 819	32.38 822	23.5 597	12.12 308	19.5 495	16.75 425
F38-23-24		350 107	200 61	120 54	162 73	92 42	134 61	35 889	29.5 749	20.5 521	23 584	39.75 1010	41.75 1060	23.5 597	12.12 308	27 686	16.75 425
F28-25-26		300 91	200 61	113 51	155 70	87 39	129 59	25.5 648	20 508	25.5 648	24.75 629	30.25 768	32.25 819	27.88 708	15.5 394	17.5 445	21.75 552
F34-25-26		400 122	250 76	126 57	168 76	93 42	135 61	31.5 800	26 660	25.5 648	24.75 629	36.25 921	38.25 972	27.88 708	15.5 394	23.5 597	21.75 552
*F16.5-30-31		200 61	100 30	100 45	150 68	80 36	130 59	13.5 343	8 203	25.5 648	28.75 730	18.25 464	18.38 467	29.88 759	15.5 394	5.5 140	21.75 552
*F20-30-31		250 76	150 46	107 49	157 71	83 38	133 60	17 432	11.5 292	25.5 648	28.75 730	21.75 552	21.88 556	29.88 759	15.5 394	9 229	21.75 552
F24-30-31		400 122	200 61	113 51	163 74	87 39	137 62	21 533	15.5 394	25.5 648	28.75 730	25.75 654	27.75 705	29.88 759	15.5 394	13 330	21.75 552
F28-30-31		500 152	250 76	121 55	171 78	90 41	140 64	25.5 648	20 508	25.5 648	28.75 730	30.25 768	32.25 819	29.88 759	15.5 394	17.5 445	21.75 552
F30-30-31		550 168	300 91	125 57	175 79	92 42	142 64	27.5 699	22 559	25.5 648	28.75 730	32.25 819	34.25 870	29.88 759	15.5 394	19.5 495	21.75 552
F34-30-31		650 198	350 107	134 61	184 83	97 44	147 67	31.5 800	26 660	25.5 648	28.75 730	36.25 921	38.25 972	29.88 759	15.5 394	23.5 597	21.75 552

Notes:

Specifications subject to change.

1. A two-way flow hub is available at no extra cost and must be specified. Assembly is threaded on both ends so swivel joint can be attached at either end of the reel. A pipe cap seals the opposite end. (See Ordering & Accessory Guide.)
2. Upon request, reels can be supplied with drum lengths other than shown and with disc sizes in other diameters.
3. Weights shown in chart are for manual rewind models. Add these amounts for power rewind models.

	Net (lbs.)	Ship (lbs.)	Net (kg.)	Ship (kg.)
Electric	40	40	18.1	18.1
Hydraulic	20	20	9.1	9.1
Air	20	20	9.1	9.1

4. When ordering power rewind models, prefix model number with:  
 E = Electric rewind (1/3 HP)      EP = Electric rewind (1/2 HP)  
 A = Air rewind      HD = Hydraulic Rewind  
 (Air rewind reels are supplied with control valve and 18" air hose; 12v and 24v DC rewind reels are supplied with switch and solenoid, 115v AC rewind reels are not supplied with switch but can be ordered separately, hydraulic rewind reels are not supplied with control valve.)

5. For polished aluminum reels, prefix complete model number with "SB"; for example: SBEF 32-19-21.

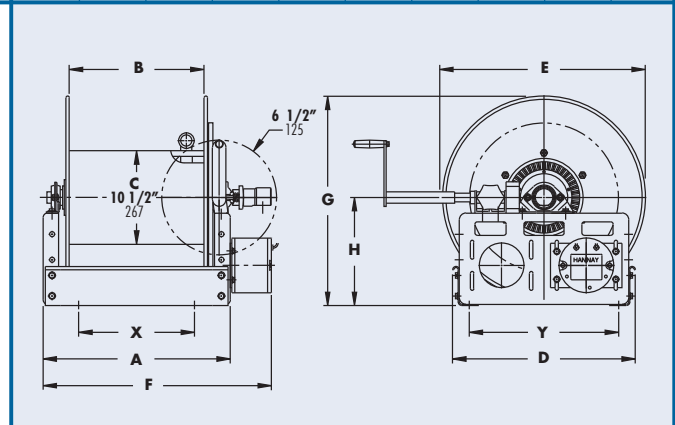
\* The "F" dimension for these models is shown for 1/3 HP motors. Add 2" to "F" dimension for 1/2 HP motors. The "F" dimension for all other reels is shown for 1/2 HP. Reels handling 200' or more must use 1/2 HP Motor. (Use prefix EP when ordering.)

6. When installing FH-3 rollers add 4-1/2" to "D" dimension.

**7. Be sure to check dimensions and weights prior to ordering.**

**NOTICE:** A Flexible Connector must be used between the inlet pipe and the inlet swivel joint.

\*\*\*x,y indicate mounting holes.



SF

## FOR BOOSTER HOSE- INBOARD MOUNTED MOTOR

To handle 3/4" I.D. or 1" I.D. hose.

- Inboard motor location high profile
- All models are available in aluminum or stainless steel construction.
- Gear-driven crank rewind is standard. Choose chain and sprocket drive powered by electric, hydraulic or compressed air motor.
- Pinion brake standard.
- Standard inlet 1" 90° ball bearing swivel joint with 1" female NPT threads.
- Standard outlet 1" male NST threads (1.375" x 8 threads per inch).
- Consult factory for other sizes and/or threads
- Standard inlet, outlet riser and hub assembly are steel (also available in stainless steel).
- Rollers and roller mounting brackets are accessory items. Specify roller position.
- Pressures to 1000 psi (69 bar)
- Temperatures from -60°F to +250°F (-51°C to +121°C).
- Consult factory for other pressures and temperatures.

**CAUTION:** When using Niedner Reeltex hose a special riser and/or larger drum diameter is required .



Standard Configuration



Parts Drawing – ISO 220

Model Number	Hose Capacity of Reel feet m.			Approx. Weight Crank Rewind <sup>3</sup> lb. kg.				Reel Dimensions <sup>***</sup> inches mm.								
	I.D. (in) I.D. (mm)	3/4" 19	1" 26	STEEL		ALUM		A	B	D	E	F	G	H	X	Y
	O.D. (in) O.D. (mm)	1-9/32" 33	1-9/16" 40	NET	SHIP	NET	SHIP									
SF32-19-21		150 46	100 30	102 46	144 65	80 36	122 55	29 737	24 610	20.5 521	21.62 549	34 864	25.12 638	15.75 400	21.5 546	16.75 425
SF24-23-24		150 46	100 30	92 42	134 61	75 34	117 53	20.5 521	15.5 394	23.5 597	23 584	25.5 648	29.25 743	17.88 454	13 330	19.75 502
SF30-23-24		250 76	150 46	105 48	147 67	82 37	124 56	27 686	22 559	23.5 597	23 584	32 813	29.25 743	17.88 454	19.5 495	19.75 502
*SF28-25-26		300 91	200 61	113 51	155 70	87 39	129 59	25 635	20 508	25.5 648	24.75 629	30 762	30.88 784	18.5 470	17.5 445	21.75 552
*SF34-25-26		400 122	250 76	126 57	168 76	93 42	135 61	31 787	26 660	25.5 648	24.75 629	36 914	30.88 784	18.5 470	23.5 597	21.75 552
SF16.5-30-31		200 61	100 30	100 45	150 68	80 36	130 59	13 330	8 203	29 737	28.75 730	18 457	35.62 905	21.25 540	5.5 140	25.25 641
SF20-30-31		250 76	150 46	107 49	157 71	83 38	133 60	16.5 419	11.5 292	29 737	28.75 730	21.5 546	35.62 905	21.25 540	9 229	25.25 641
*SF24-30-31		400 122	200 61	113 51	163 74	87 39	137 62	20.5 521	15.5 394	29 737	28.75 730	25.5 648	35.62 905	21.25 540	13 330	25.25 641
*SF28-30-31		500 152	250 76	121 55	171 78	90 41	140 64	25 635	20 508	29 737	28.75 730	30 762	35.62 905	21.25 540	17.5 445	25.25 641
*SF30-30-31		550 168	300 91	125 57	175 79	92 42	142 64	27 686	22 559	29 737	28.75 730	32 813	35.62 905	21.25 540	19.5 495	25.25 641
*SF34-30-31		650 198	350 107	134 61	184 83	97 44	147 67	31 787	26 660	29 737	28.75 730	36 914	35.62 905	21.25 540	23.5 597	25.25 641

Notes:

Specifications subject to change.

1. A two-way flow hub is available at no extra cost and must be specified. Assembly is threaded on both ends so swivel joint can be attached at either end of the reel. A pipe cap seals the opposite.
2. Upon request, reels can be supplied with drum lengths other than shown and with disc sizes in other diameters.
3. Weights in chart are for manual rewind models. Add these amounts for power rewind models.

	Net (lbs.)	Ship (lbs.)	Net (kg.)	Ship (kg.)
Electric	40	40	18.1	18.1
Hydraulic	20	20	9.1	9.1
Air	20	20	9.1	9.1

4. When ordering power rewind models, prefix model number with:  
 E = Electric Rewind (1/3 HP)    EP = Electric Rewind (1/2 HP)  
 A = Air Rewind                      HD = Hydraulic Rewind  
 (12v and 24v DC rewind reels are supplied with switch and solenoid; 115v AC rewind reels (prefix EP) are not supplied with switch but can be ordered separately.)

5. For polished aluminum reels, prefix complete model number with "SB"; for example: SBESF32-19-21.

6. All frames are rollformed channel, except Super Booster, which is square tubing.

**7. Be sure to check dimensions and weights prior to ordering.**

**NOTICE:** A Flexible Connector must be used between the inlet pipe and the inlet swivel joint.

\* Reels handling 200' or more of 1" must use 1/2 HP Motor.

\*\*\*x,y indicate mounting holes.

