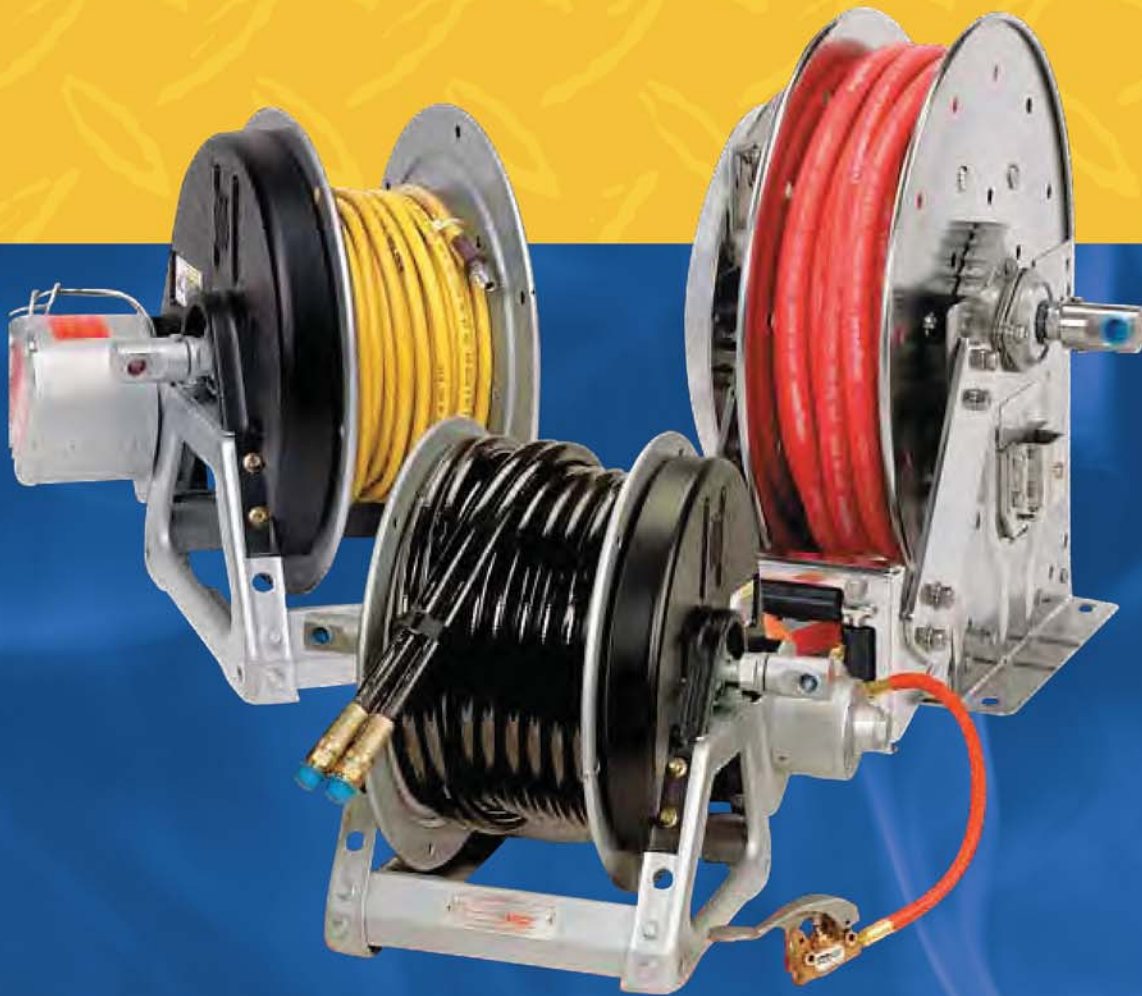




# INDUSTRIAL HOSE REELS



North Carolina  
210 Labrador Drive  
Randleman, NC 27317  
Phone 336.674.0749  
FAX 336.674.3688  
[www.safeairsystems.com](http://www.safeairsystems.com)

Worldwide Distribution and Service.  
**1.800.424.8633**

# N700

## SPRING REWIND REELS

To handle 1/4" through 1/2" I.D. hose.

- Standard N Series has a narrow frame and compact mounting base.
- Non sparking ratchet assembly.
- Declutching arbor to prevent damage from reverse winding.
- Standard inlet 90° balanced pressure swivel joint 1/2" female NPT threads.
- Standard outlet 1/2" female NPT threads.
- Standard Pressures to 3000 psi (207 bar) (available up to 10,000 psi 690 bar).
- Temperatures from -60° F to +250° F (-51° C to +121° C).
- Consult factory for other pressures & temps.
- 4-way roller assembly.
- Constant Tension is available – consult factory.



Shown with  
Optional TR  
Roller Position

For:

- Lubrication
- Air/Water
- Assembly Operations
- Washdown
- Air Tools
- General Industrial Applications

### Parts Drawing – ISO 79

Model Number	Hose Capacity of Reel				Approx. Weight			Standard Roller Assy	Reel Dimensions***							
	feet				NET	UPS/ FedEx	Freight		A	B	C	E	F	G	H	X
	m.															
I.D. (in)	1/4"	3/8"	1/2"		Wt.	Wt.										
I.D. (mm)	6	10	13													
O.D. (in)	5/8"	3/4"	7/8"													
O.D. (mm)	16	19	22													
N716-14-16-8C	–	25	25	52	64*	87	N204	10	4	8	17.62	11.25	16.25	9.12	8	
	–	8	8	24	29	39		254	102	203	448	286	413	232	203	
N716-16-17C	–	35	35	55	67*	90	N204	10	4	10.5	18.5	11.25	17	9.12	8	
	–	11	11	25	30	41		254	102	267	470	286	432	232	203	
N716-19-20J	–	50	50	64	82*	99	N204	10	4	10.5	20.75	11.25	20	10.62	8	
	–	15	15	29	37	45		254	102	267	527	286	508	270	203	
N716-23-24-15.5G	100	75	65	94	101*	129	N204	10	4	15.5	23.75	11.25	24	12.62	8	
	30	23	20	43	46	59		254	102	394	603	286	610	321	203	
N716-23-24-15.5J	–	65	65	79	86*	114	N204	10	4	15.5	23.75	11.25	24	12.62	8	
	–	20	20	36	39	52		254	102	394	603	286	610	321	203	
N716-25-26-15.5B	–	75	75	90	–	125	N204	10	4	15.5	25.25	11.25	26	13.62	8	
	–	23	23	41	–	57		254	102	394	641	286	660	346	203	
N718-25-26-15.5G	–	100	100	96	–	131	N206	12	6	15.5	25.25	13.25	26	13.62	10	
	–	30	30	44	–	59		305	152	394	641	337	660	346	254	

**Notes:**

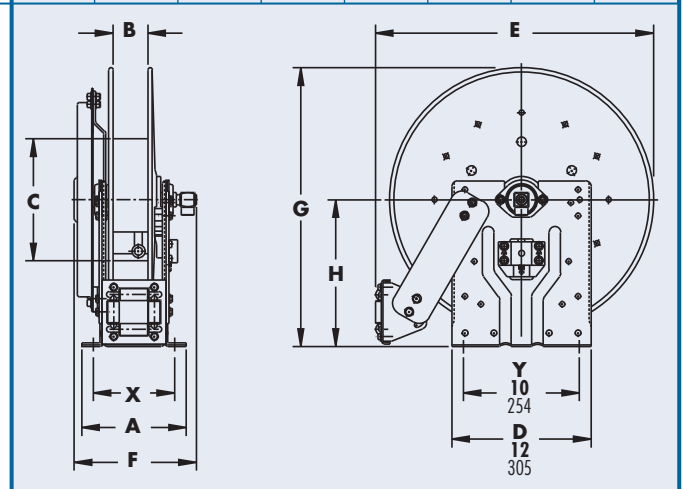
1. Specifications subject to change.
2. Reel models and capacities shown are for standard drag applications; for vertical lift applications consult factory.
3. Other sizes, from standard components, available on request.

**5. Be sure to check dimensions and weights prior to ordering.**

**NOTICE:** A Flexible Connector must be used between the inlet pipe and the inlet swivel joint.

\* Dimensional weight may apply when shipped as a parcel package (via FedEx or UPS Ground).

\*\*\* x,y indicate mounting holes.



# 700

## SPRING REWIND REELS

To handle 1/4" through 1/2" I.D. hose.



Standard Configuration Shown

**For:**

- Lubrication
- Air/Water
- Assembly Operations
- Washdown
- Air Tools
- General Industrial Applications

- Rollformed channel frame for heavy-duty applications.
- Non sparking ratchet assembly.
- Declutching arbor to prevent damage from reverse winding.
- Standard inlet 90° balanced pressure swivel joint 1/2" female NPT threads.
- Standard outlet 1/2" female NPT threads.
- Standard Pressures to 3000 psi (207 bar) (available up to 10,000 psi 690 bar).
- Temperatures from -60° F to +250° F (-51° C to +121° C).
- Consult factory for other pressures & temps.
- 4-way roller assembly.
- Constant Tension is available – consult factory.

**Parts Drawing – ISO 66**

Model Number	Hose Capacity of Reel			Approx. Weight			Standard Roller Assy	Reel Dimensions***									
	feet			lb.				inches									
	m.			kg.				mm.									
	I.D. (in) I.D. (mm)	3/8" 10	1/2" 13	NET	UPS/ FedEx	Freight		A	B	C	D	E	F	G	H	X	Y
	O.D. (in) O.D. (mm)	3/4" 19	7/8" 22		SHIP Wt.	SHIP Wt.											
716-23-24-15.5G		75 23	65 20	94 43	102* 46	129 59	R204	9.25 235	4 102	15.5 394	23.25 591	24.38 619	12.75 324	23.88 607	12.5 318	4.5 114	20.25 514
716-23-24-15.5J		65 20	65 20	79 36	86* 39	114 52	R204	9.25 235	4 102	15.5 394	23.25 591	24.38 619	12.75 324	23.88 607	12.5 318	4.5 114	20.25 514
716-25-26-15.5B		75 23	75 23	90 41	- -	125 57	R204	9.25 235	4 102	15.5 394	25 635	26.12 663	12.75 324	25.88 657	13.5 343	4.5 114	22 559
718-25-26-15.5G		100 30	100 30	96 44	- -	131 59	R206	11.25 286	6 152	15.5 394	25 635	26.12 663	14.75 375	25.88 657	13.5 343	6.5 165	22 559
718-30-31-20D		150 46	125 38	127 58	- -	162 73	R206	11.25 286	6 152	20 508	28.5 724	29.62 752	15.5 394	31.38 797	17 432	6.5 165	25.5 648

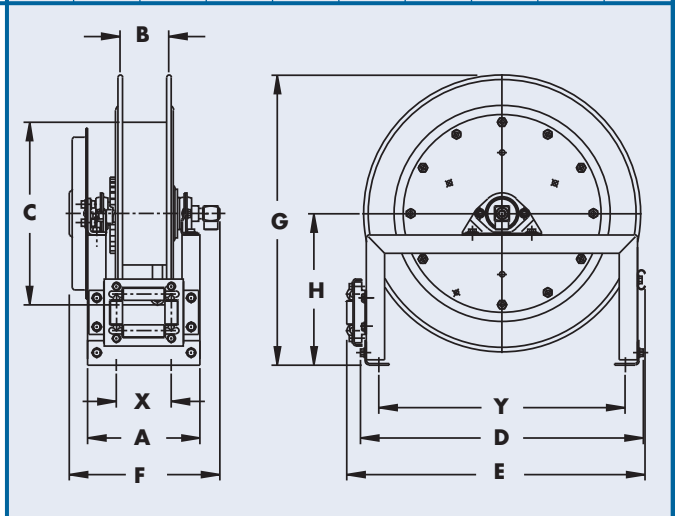
**Notes:**

1. Specifications subject to change.
2. Reel models and capacities shown are for standard drag applications; for vertical lift applications consult factory.
3. Other sizes, from standard components, available on request.

**5. Be sure to check dimensions and weights prior to ordering.**

**NOTICE:** A Flexible Connector must be used between the inlet pipe and the inlet swivel joint.

\*\*\* x,y indicate mounting holes.



# N800

## SPRING REWIND REELS

To handle 3/4" or 1" I.D. hose.

- Standard N series has a narrow frame and compact mounting base.
- Non sparking ratchet assembly.
- Declutching arbor to prevent damage from reverse winding.
- Standard inlet 90° balanced pressure swivel joint 1" female NPT threads.
- Standard outlet 1" female NPT threads.
- Pressures to 1000 psi (69 bar).
- Temperatures from -40° F to +250° F (-40° C to +121° C).
- Consult factory for other pressures & temps.
- 4-way roller assembly
- Constant Tension is available – consult factory.



Optional TR roller position shown

For:

• Fuel Dispensing  
(Consult Factory)

• Waste Oil Evacuation  
• Air/Water

### Parts Drawing – ISO 81

Model Number	Hose Capacity			Approx. Weight			Standard Roller Assy	Reel Dimensions***							
	feet			lb.				in.							
	m.			kg.				mm							
I.D. (in)	3/4"	1"	NET	UPS/FedEx SHIP Wt.	Freight SHIP Wt.	A	B	C	E	F	G	H	X		
I.D. (mm)	19	25												O.D. (in)	1-9/32"
N816-19-20J	25	15	75	83*	110	N204	10	4	10.5	20.75	13	20	10.62	8	
	8	5	34	38	50		254	102	267	527	330	508	270	203	
N818-23-24J	50	25	87	-	122	N206	12	6	10.5	23.75	15	24	12.62	10	
	15	8	39	-	55		305	152	267	603	381	610	321	254	
N816-25-26B	60	35	96	-	131	N204	10	4	10.5	25.25	13	26	13.62	8	
	18	11	44	-	59		254	102	267	641	330	660	346	203	
N818-25-26B	70	50	102	-	137	N206	12	6	10.5	25.25	15	26	13.62	10	
	21	15	46	-	62		305	152	267	641	381	660	346	254	

**Notes:**

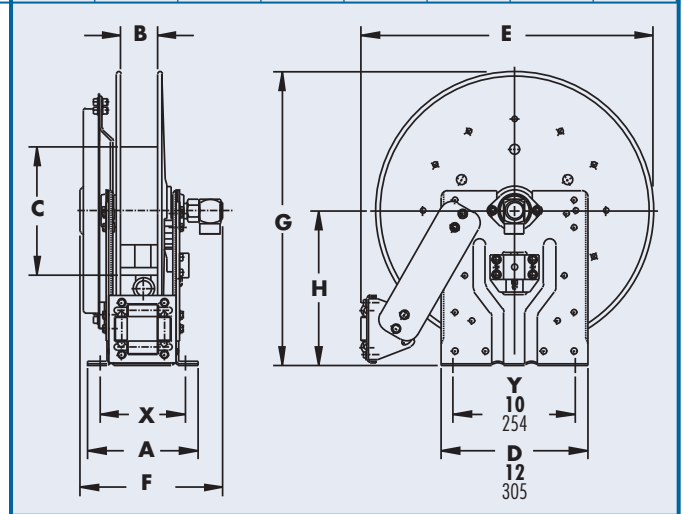
1. Specifications subject to change.
2. Reels models and capacities shown are for standard drag applications; for vertical lift applications consult factory.
3. Other sizes, from standard components, available on request.

**5. Be sure to check dimensions and weights prior to ordering.**

**NOTICE:** A Flexible Connector must be used between the inlet pipe and the inlet swivel joint.

\* Dimensional weight may apply when shipped as a parcel package (via FedEx or UPS Ground).

\*\*\* x,y indicate mounting holes.



# 800

## SPRING REWIND REELS

To handle 3/4" or 1" I.D. hose.



Standard Configuration Shown

- Rollformed channel frame for heavy-duty applications.
- Non sparking ratchet assembly.
- Declutching arbor to prevent damage from reverse winding.
- Standard inlet 90° balanced pressure swivel joint 1" female NPT threads.
- Standard outlet 1" female NPT threads.
- Pressures to 1000 psi (69 bar).
- Temperatures from -40° F to +250° F (-40° C to +121° C).
- Consult factory for other pressures & temps.
- 4-way roller assembly.
- Constant Tension is available – consult factory.

For:

- Fuel Dispensing (Consult Factory)
- Waste Oil Evacuation
- Air/Water

### Parts Drawing – ISO 42

Model Number	Hose Capacity			Approx. Weight		Standard Roller Assy	Reel Dimensions***								
	feet m.			NET	SHIP		in. mm								
	I.D. (in) I.D. (mm)	3/4" 19	1" 25				A	B	C	D	E	F	G	H	X
818-23-24J	50 15	25 8	87 39	122 55	R206	11.25 286	6 152	10.5 267	23.25 591	24.38 619	15.5 394	23.88 607	12.5 318	6.5 165	20.25 514
816-25-26B	60 18	35 11	96 44	131 59	R204	9.25 235	4 102	10.5 267	25 635	26.12 663	13.5 343	25.88 657	13.5 343	4.5 114	22 559
818-25-26B	70 21	50 15	102 46	137 62	R206	11.25 286	6 152	10.5 267	25 635	26.12 663	15.5 394	25.88 657	13.5 343	6.5 165	22 559
820-25-26-10.5A	85 26	75 23	131 59	166 75	R308	13.25 337	8 203	10.5 267	25 635	27 686	18.25 464	25.88 657	13.5 343	8.5 216	22 559
820-30-31-10.5A	– –	100 30	137 62	172 78	R308	13.25 337	8 203	10.5 267	28.5 724	30.5 775	18.25 464	31.38 797	17 432	8.5 216	25.5 648
820-30-31-15.5A	100 30	– –	145 66	180 82	R308	13.25 337	8 203	15.5 394	28.5 724	30.5 775	18.25 464	31.38 797	17 432	8.5 216	25.5 648

**Notes:**

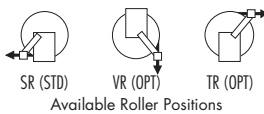
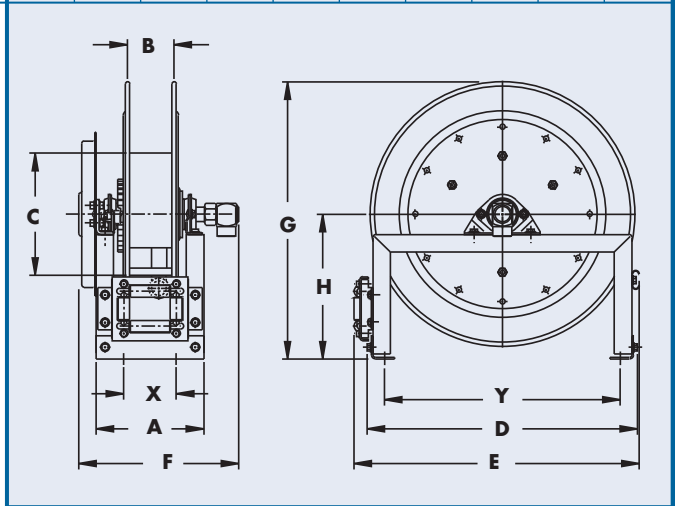
1. Specifications subject to change.
2. Reels models and capacities shown are for standard drag applications; for vertical lift applications consult factory.
3. Other sizes, from standard components, available on request.

**5. Be sure to check dimensions and weights prior to ordering.**

**NOTICE:** A Flexible Connector must be used between the inlet pipe and the inlet swivel joint.

\* Dimensional weight may apply when shipped as a parcel package (via FedEx or UPS Ground).

\*\*\* x,y indicate mounting holes.



# 1100/AT1200

## PORTABLE HOSE REELS ON WHEELS

To handle 3/8" through 1" I.D. hose.

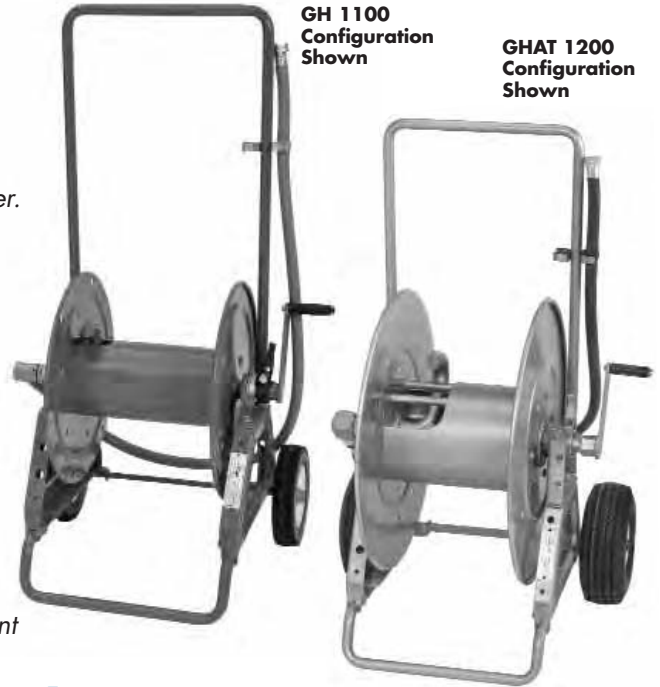
- Continuous flow reels with swivel joint inlet, fluid hub, outlet riser.
- Direct crank rewind and cam-lock brake.
- One-piece foot, and removable steel handlebar.
- Permanently attached crank.
- GH Prefix to model # (e.g. GH1100, GHAT1200) includes garden hose thread on outlet, 5' lead-in hose, hose end clips.

**Model 1100** – standard inlet 90° ball bearing swivel joint 1/2" female NPT threads.

- Standard outlet is 1/2" female NPT threads.
- Pressures to 3000 psi (207 bar).
- Temperatures from +20° F to +400° F (-7° C to +204° C).
- Comes with rubber tires.

**Model AT1200** – standard inlet 90° balance pressure swivel joint 1" female NPT threads.

- Standard outlet is 1" female NPT threads.
- Operates at pressures to 1000 psi (69 bar).
- Temperatures from -40° F to +250° F (-40° C to +121° C).
- Consult factory for other pressures & temps.
- Comes with pneumatic tires.



For:

- Grounds Maintenance
- Restaurants/Hotels
- Washdown Operations
- Home Use

Parts Drawing – 1100-ISO 48; AT1200-ISO 87

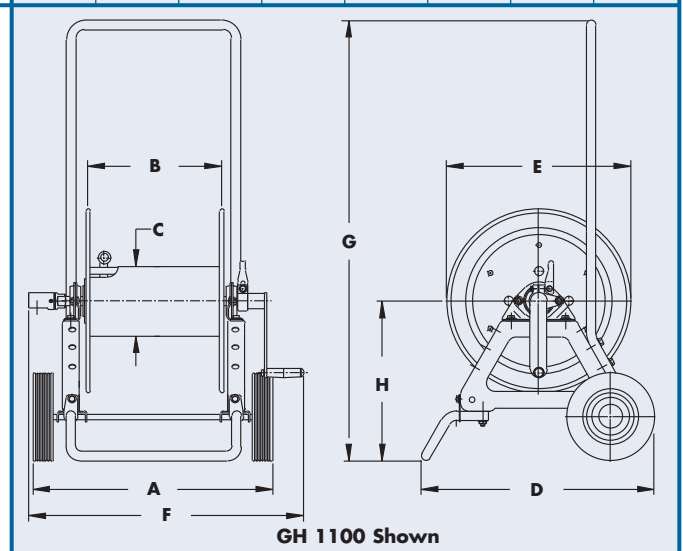
Model Number	Hose Capacity of Reel						Approx. Weight		Reel Dimensions							
	feet						NET	SHIP	inches							
	m.								mm.							
I.D. (in)	3/8"	1/2"	5/8"	3/4"	1"			A	B	C	D	E	F	G	H	
I.D. (mm)	10	13	16	19	25											
O.D. (in)	3/4"	7/8"	1"	1-9/32"	1-9/16"											
O.D. (mm)	19	22	25	-	-											
1100	275	175	125	-	-	47	85*	21.5	12	6	22	16.5	24.62	39	13.81	
	84	53	38	-	-	21	39	546	305	152	559	419	625	991	351	
AT1200	-	350	250	150	100	86	125*	24.88	11.5	8	23	22.75	26.5	40	17.25	
	-	107	76	46	30	39	57	632	292	203	584	578	673	1016	438	

**Notes:**

1. Specifications subject to change.

**3. Be sure to check dimensions and weights prior to ordering.**

\* Dimensional weight may apply when shipped as a parcel package (via FedEx or UPS Ground). Some assembly required.



GH 1100 Shown

# C1150/ATC1250

## PORTABLE STORAGE REELS ON WHEELS

For storage of hose, cable, rope or wire.

- Direct crank rewind.
- One-piece foot, and removable steel handlebar.
- Supplied with a cam-lock drag brake.

**C1150** – with rubber tires.

- A 1-1/8" x 2-3/8" (28 mm x 60 mm) opening in the drum to initiate winding.

**ATC1250** – with pneumatic tires.

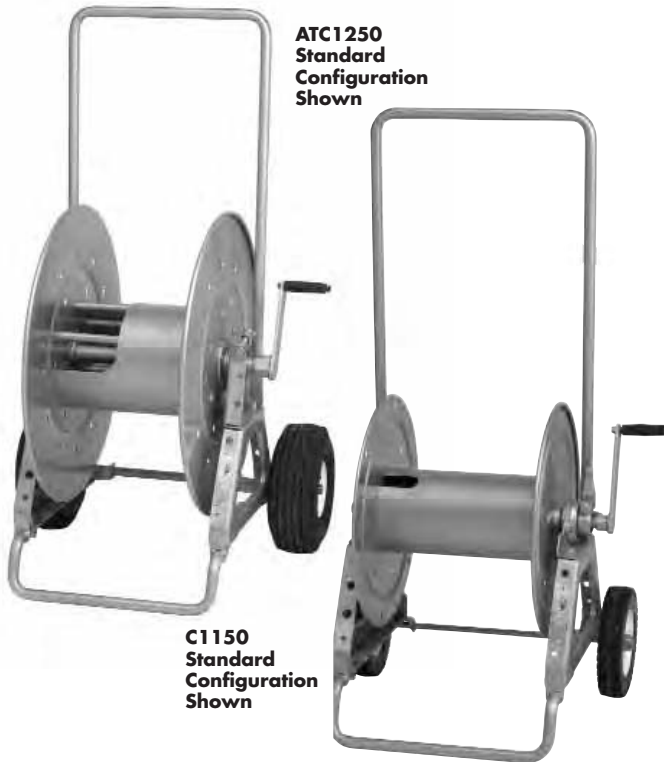
- A larger version of the C1150 with a 4-1/2" x 9" (114 mm x 229 mm) drum opening.

For:

- Industrial Maintenance
- Construction
- Agriculture
- Grounds Maintenance



Optional Folding Handle for Compact Storage



ATC1250 Standard Configuration Shown

C1150 Standard Configuration Shown

### Parts Drawing – C1150-ISO 87; ATC1250-ISO 48

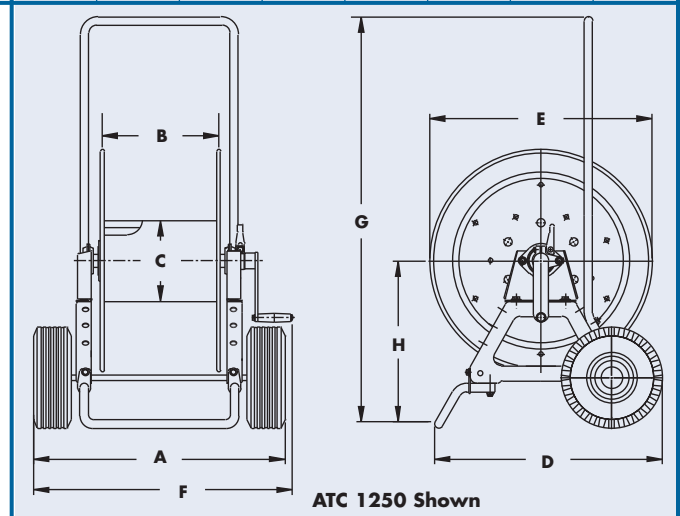
Model Number	Cable Capacity of Reel				Approx. Weight		Reel Dimensions							
	feet				lb.		inches							
	m.				kg.		mm.							
	Gauge/Number of Conductors				NET	SHIP	A	B	C	D	E	F	G	H
O.D. (in) O.D. (mm)	16/3 .390 10	14/3 .530 14	12/3 .600 15	10/3 .690 18										
C1150	1100	500	400	300	44	85*	21.5	12	6	22	16.5	24.25	39	13.81
	335	152	122	91	20	39	546	305	152	559	419	616	991	351
ATC1250	1800	950	750	550	84	125*	24.88	11.5	8	23	22.75	26.5	40	17.25
	549	290	229	168	38	57	32	292	203	584	578	673	1016	438

**Notes:**

1. Specifications subject to change.
2. When ordering specify model number, O.D., length and weight of cable, hose, etc.

**4. Be sure to check dimensions and weights prior to ordering.**

\* Dimensional weight may apply when shipped as a parcel package (via FedEx or UPS Ground). Some assembly required.



ATC 1250 Shown